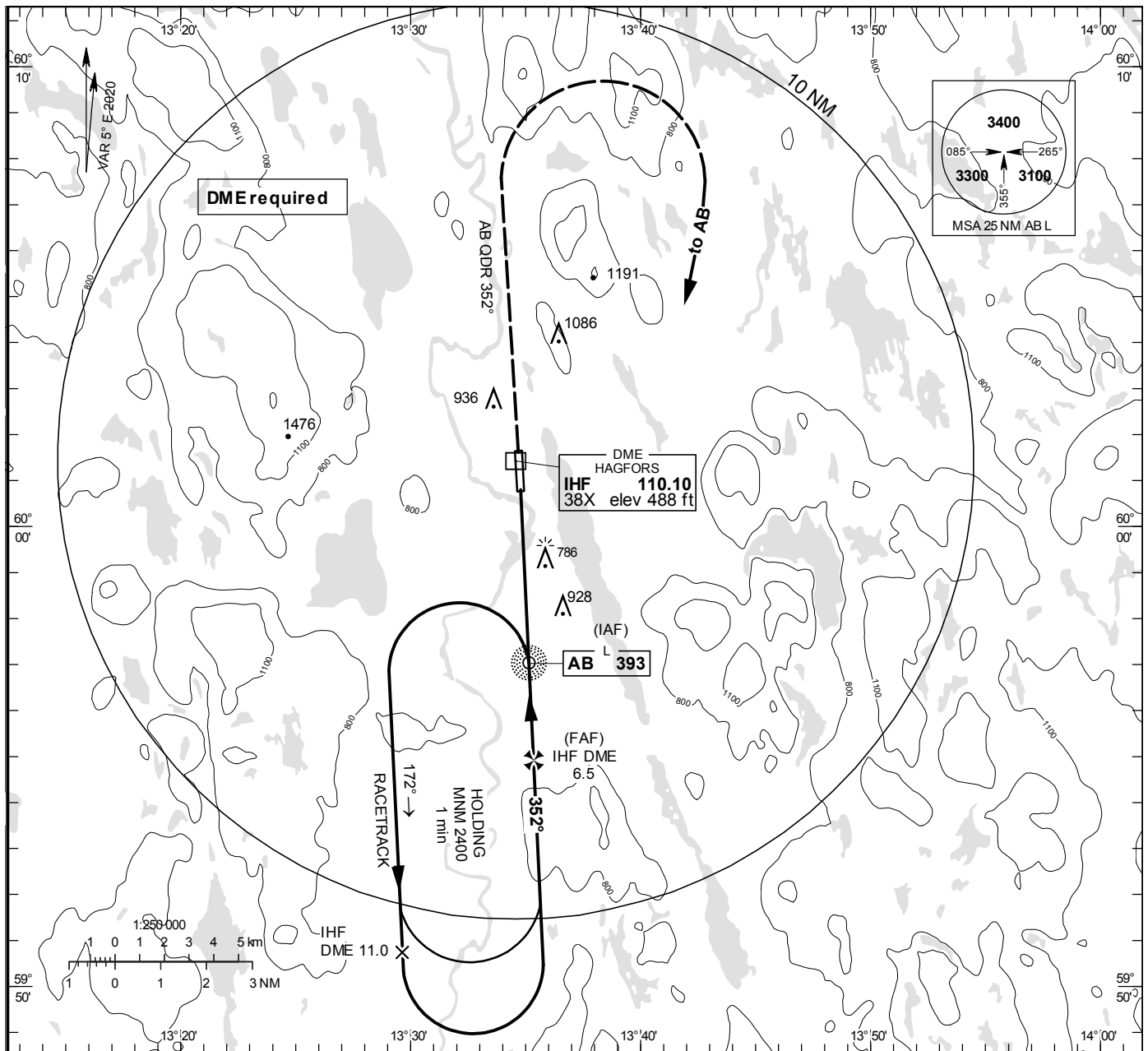


**INSTRUMENT  
APPROACH  
CHART – ICAO**

**THR ELEV 469 ft, AD ELEV 474 ft**  
 OCH are related to THR.  
 Circling OCH are related to AD ELEV.  
 BRG are MAG  
 ALT. HGT and ELEV in ft.

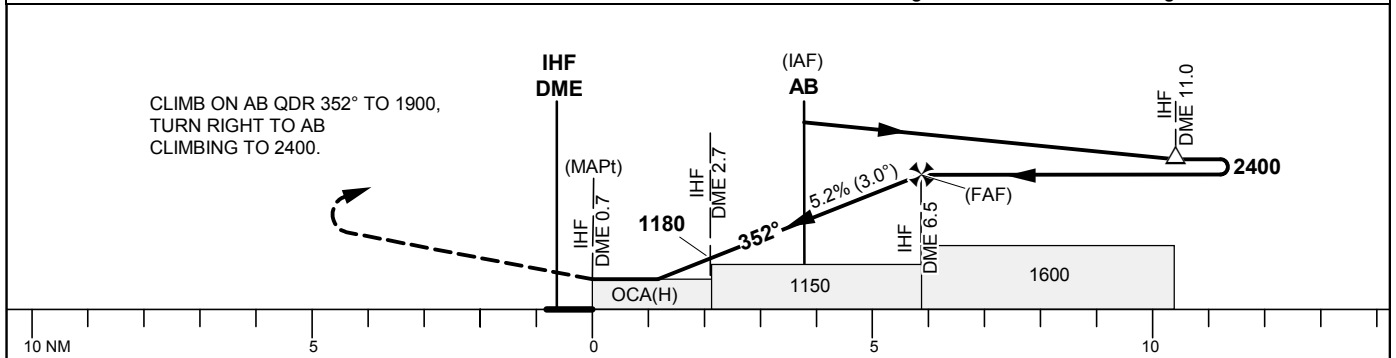
HAGFORS  
 INFORMATION

122.230



TA 5000 ft AMSL

\*Timing not authorized for defining the MAPt



OCA (H)			Final approach	Distance FAF-MAPt 5.8 NM*				
Cat of ACFT	A	B	DME IHF NM	3	4	5	6	
Straight-in Approach	1040 (580)		ALT	1270	1590	1910	2230	
			GS	kt	80	100	120	140
Circling	1240 (770)	1390 (920)	Time	min:s	4:23	3:30	2:55	2:30
			Rate of descent	ft/min	425	530	635	745

CHANGE: Editorial